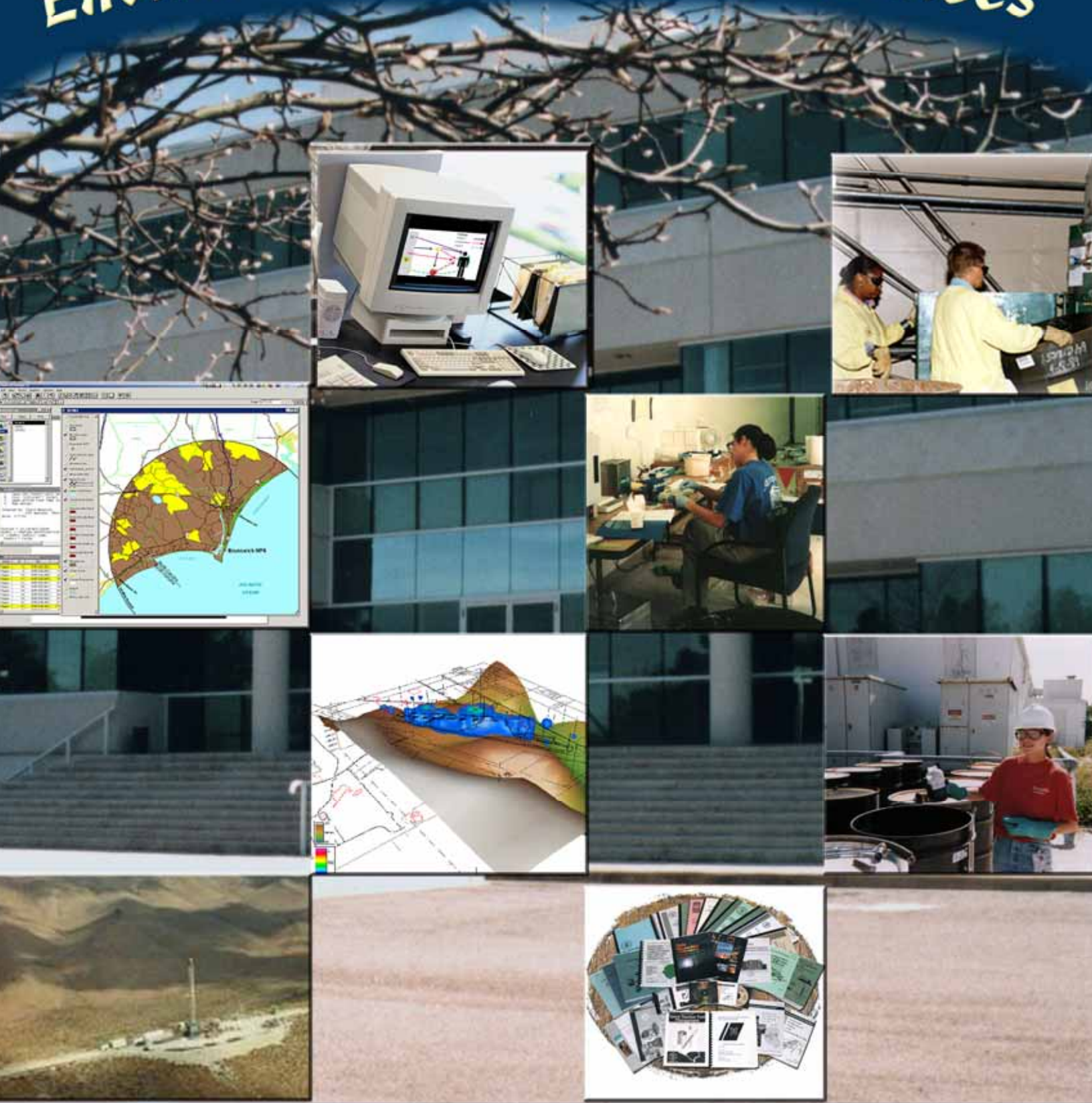


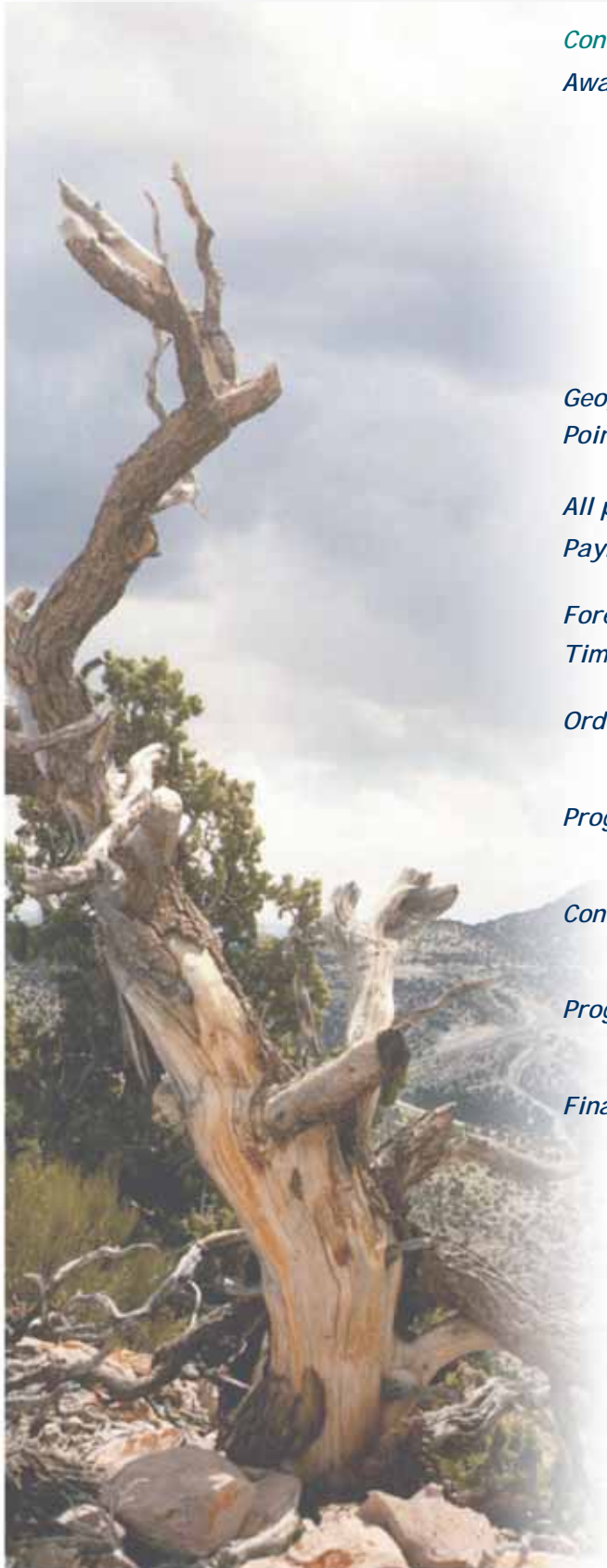
Environmental Advisory Services



Tetra Tech NUS, Inc.

GSA Schedule
GS-10F-0062N
Base 2002 - 2007
Option I 2007 - 2012

Ordering and Payment Information



Contract Number: GS-10F-0062N

Awarded Special Item Numbers (SINs):

- ◆ SIN 899-1 (and 899-1RC) Environmental Planning Services and Documentation
- ◆ SIN 899-2 (and 899-2RC) Environmental Compliance Services
- ◆ SIN 899-3 (and 899-3RC) Environmental Occupational Training Services
- ◆ SIN 899-4 (and 899-4RC) Waste Management Services
- ◆ SIN 899-7 (and 899-7RC) Geographic Information Systems
- ◆ SIN 899-8 (and 899-8RC) Remediation Services

Geographic Area Covered: Domestic

Point of Production: Over 200 offices worldwide, over 7,000 professionals

All prices listed reflect the net price for the service in question

Payment Terms: 0%, net 30 days
Government credit cards accepted

Foreign items: None

Time of Delivery: Will be negotiated for individual task orders

Ordering Address: Tetra Tech NUS, Inc.
900 Trail Ridge Road
Aiken, South Carolina 29803

Program Manager: Janet Mandel
(301) 528-3034
janet.mandel@tetratech.com

Contract Manager: Gabrielle Koscielski
(301) 528-3066
gabrielle.koscielski@tetratech.com

Program Administrator: Debbie Pyron
(803) 641-4928
debbie.pyron@tetratech.com

Financial Administrator: Ruth Garland
(803) 641-6329
ruth.garland@tetratech.com



About Tetra Tech NUS

Tetra Tech NUS, Inc. is a technical services company that provides high quality consulting, engineering, remediation/construction, and information technology services. We employ more than 500 technical professionals located in offices throughout the U.S. For over 40 years Tetra Tech NUS has been providing environmental planning, compliance, training, waste management, GIS, and remediation services to international, federal, state, local, and commercial/industrial clients. Our experience is reflected by the long list of satisfied clients, many of which are repeat customers.

In addition, as a wholly owned subsidiary of Tetra Tech, Inc., Tetra Tech NUS, has access to more than 7,000 personnel located in over 200 offices worldwide.

“For over 40 years, TtNUS has been providing comprehensive environmental services including planning, compliance, training, waste management, GIS, and remediation services...”





SIN 899-1 (and 899-1RC): Environmental Planning Services & Documentation

Tetra Tech NUS provides planning services, environmental management activities, and preparation of any documentation related to these activities.

- *Environmental Impact Statements and Assessments under the National Environmental Policy Act (NEPA)*
- *License Renewal Support to Commercial Nuclear Power Industry under NEPA*
- *Endangered Species and/or Wetland Compliance*
- *Archeological and/or Cultural Resources Management*
- *Economic, Technical, and/or Risk Analysis*
- *Environmental Program*
- *Environmental Regulation*
- *Environmental Management Systems*
- *Environmental Information Management*
- *Occupational Radiation Protection*
- *Industrial Hygiene and Safety Services*
- *Radiological Risk*

SIN 899-2 (and 899-2RC): Environmental Compliance Services

Tetra Tech NUS can assist with environmental compliance requirements, including interpreting environmental regulations, developing plans to meet environmental regulations, or auditing to determine compliance with environmental regulations. We conduct pollution prevention plans, evaluate the economic and technical feasibility of process changes and recycling alternatives, and create databases to track progress in achieving pollution prevention goals.

- *Develop Plans to Meet Environmental Regulations*
- *Environmental Compliance Audits*
- *Industrial Hygiene and Safety Compliance Audits*
- *Compliance Management Planning*
- *Pollution Prevention Surveys*
- *Compliance Effects of Process Modifications*

SIN 899-3 (and 899-3RC): Environmental Occupational Training Services

Tetra Tech NUS has been developing and performing customized and off-the-shelf environmental and occupational training activities for federal government clients since 1985. We have trained personnel and contractors from the U.S. Departments of Energy, Defense, Transportation, and Interior, as well as the U.S. Environmental Protection Agency (EPA), Central Intelligence Agency, and U.S. Postal Service.

- *Off-the-Shelf Courses*
- *Computer Based Course*
- *Customized Course Development*
- *Employee Training*





SIN 899-4 (and 899-4RC): Waste Management Services

Tetra Tech NUS offers operational services, advice, or guidance in support of agencies' environmental compliance. Services may include, but are not limited to:

- *Data Collection*
- *Feasibility or Risk Analysis*
- *Source Reduction*
- *RCRA/CERCLA Site Investigation*
- *Hazard and/or Non Hazard Exposure Assessments*
- *Waste Characterization Studies*
- *Review and Recommendation of Waste Tracking or Handling Systems*
- *Waste Management Plans and/or Surveys*
- *Review of Technologies and Processes Impacting Waste Management*
- *Management, Provision or Inventory of Material Safety Data via CD, Internet, Facsimile, Mail or other media*
- *Reporting and Compliance Software*
- *Development of Emergency Response Plans*
- *Hazardous/Non Hazardous Materials Tracking Software*
- *Creation and Maintenance of HAZMAT Tracking Systems*

SIN 899-7 (and 899-7RC): Geographic Information Systems

Tetra Tech NUS offers a full range of Geographic Information Systems (GIS) services to support and enhance environmental facility and engineering services, including web-based GIS. Tetra Tech NUS GIS management system enables clients to become proactive, reducing risks and liabilities.

- *Mapping and Cartography*
- *Natural Resource Planning*
- *Site Selection*
- *Migration Pattern Analysis*
- *Pollution Analysis*
- *Emergency Preparedness Planning*
- *Spatial Data Analysis*
- *Data Modeling and Development/Management*

SIN 899-8 (and 899-8RC): Remediation Services

Tetra Tech NUS uses state-of-the-art investigation techniques, including soil borings, monitoring wells, soil gas surveys, geophysical methods and others, to provide clients with the best remediation services available. Since 1991 Tetra Tech NUS has supported DoD on projects from preliminary assessments of properties and buildings through comprehensive environmental services for installation restoration, environmental compliance, base closures, and strategic environmental program management.

- *Preparation, Characterization, Field Investigation, Conservation and Closure of Site*
- *Excavation, Removal, Manifesting, Transportation, Storage, Treatment (Onsite and Offsite) and/or Disposal of Hazardous Waste*
- *Decontamination and Decommissioning/ Environmental Restoration*
- *Long-Term Monitoring/Long-Term Operation*
- *Containment, Monitoring, and/or Reduction of Hazardous Waste Sites*
- *Ordnance Removal Support*





If the agency Contracting Officer chooses to purchase from these SINs on a labor hour basis, the resultant task/delivery order shall specify the not-to-exceed price, the labor category(ies) proposed (with the hourly and daily rates for each), and any other direct costs (ODCs). The agency Contracting Officer will negotiate pricing of ODCs with the Tetra Tech NUS Contracting Officer. Rates include .75% Industrial Funding Fee (IFF).

Price List/Labor Categories Option Period Year 6 through 10 - 11/01/2007 thru 10/31/2012

*The rates for each year are effective beginning November 1st of that year and continuing through October 31st of the following year. For example, rates for Year 6 are effective from November 1, 2007 to October 31, 2008.

Labor Category	Government Hourly Rate*				
	Year 6 11/01/2007 to 10/31/2008	Year 7 11/01/2008 to 10/31/2009	Year 8 11/01/2009 to 10/31/2010	Year 9 11/01/2010 to 10/31/2011	Year 10 11/01/2011 to 10/31/2012
Senior Program/Project Manager	180.57	186.89	193.43	200.20	207.20
Mid-level Program/Project Manager	155.50	160.95	166.58	172.41	178.44
Project Manager	133.94	138.63	143.48	148.50	153.70
Scientist VII	180.57	186.89	193.43	200.20	207.20
Scientist VI	155.50	160.95	166.58	172.41	178.44
Scientist V	133.94	138.63	143.48	148.50	153.70
Scientist IV	115.44	119.48	123.66	127.99	132.47
Scientist III	99.50	102.99	106.59	110.32	114.18
Scientist II	85.83	88.84	91.95	95.17	98.50
Scientist I	74.08	76.67	79.35	82.13	85.01
Engineer VII	180.57	186.89	193.43	200.20	207.20
Engineer VI	155.50	160.95	166.58	172.41	178.44
Engineer V	133.94	138.63	143.48	148.50	153.70
Engineer IV	115.44	119.48	123.66	127.99	132.47
Engineer III	99.50	102.99	106.59	110.32	114.18
Engineer II	85.83	88.84	91.95	95.17	98.50
Engineer I	74.08	76.67	79.35	82.13	85.01
Professional Specialist VII	133.94	138.63	143.48	148.50	153.70
Professional Specialist VI	115.44	119.48	123.66	127.99	132.47
Professional Specialist V	99.50	102.99	106.59	110.32	114.18
Professional Specialist IV	85.83	88.84	91.95	95.17	98.50
Professional Specialist III	74.08	76.67	79.35	82.13	85.01
Professional Specialist II	63.95	66.19	68.51	70.91	73.39
Professional Specialist I	55.30	57.23	59.24	61.31	63.46
Administrative Support VI	63.42	65.64	67.94	70.32	72.78
Administrative Support V	56.06	58.02	60.05	62.15	64.33
Administrative Support IV	49.56	51.29	53.09	54.95	56.87
Administrative Support III	43.84	45.38	46.97	48.61	50.31
Administrative Support II	38.84	40.20	41.61	43.07	44.57
Administrative Support I	34.41	35.62	36.86	38.15	39.49

Additional Price List/Labor Categories for SIN 899-8 (and 899-8RC) Base for onsite remediation personnel. Option Period Year 6 through 10 - 11/01/2007 thru 10/31/2012

Labor Category	Government Hourly Rate*				
	Year 6 01/01/2007 10/31/2008	Year 7 01/01/2008 10/31/2009	Year 8 01/01/2009 10/31/2010	Year 9 11/01/2010 10/31/2011	Year 10 11/01/2011 10/31/2012
Construction Project Manager	95.52	98.86	102.32	105.91	109.61
Field Superintendent	88.40	91.49	94.70	98.01	101.44
Supervisor	64.95	67.22	69.57	72.01	74.53
Transportation/Disposal Coord.	41.76	43.22	44.74	46.30	47.92
Foreman	46.89	48.54	50.23	51.99	53.81
Mechanic	41.57	43.02	44.53	46.09	47.70
Welder	41.19	42.63	44.13	45.67	47.27
Electrician	61.11	63.25	65.46	67.75	70.12
Equipment Operator	50.33	52.09	53.92	55.81	57.76
Carpenter	48.41	50.10	51.86	53.67	55.55
Truck Driver	42.16	43.64	45.16	46.74	48.38
Lead Recovery Tech. (Laborer)	43.53	45.05	46.63	48.26	49.95
Recovery Technician (Laborer)	31.34	32.43	33.57	34.74	35.96
Clerk	34.87	36.09	37.35	38.66	40.02

*The rates for each year are effective beginning November 1st of that year and continuing through October 31st of the following year. For example, rates for Year 6 are effective from November 1, 2007 to October 31, 2008.

Using the GSA Schedule



How do I use the GSA Schedule?

- Step 1** Identify short-term and long-term requirements.
- Step 2** Prepare a statement of work (scope, schedule, and deliverables) and establish a funding mechanism.
- Step 3** For orders of less than \$2,500, select the contractor that is best suited to your needs and arrange for your contracting officer to place the order directly with the contractor.
For orders of more than \$2,500, have your contracting officer issue the statement of work and a request for quotation to three prequalified environmental advisory service firms.
- Step 4** After you have received the responses to the request for quotation, review them to identify the best value and place your order.



Frequently Asked Questions

- ◆ **Why is using a GSA Schedule contractor better than purchasing on the open market?** GSA has already deemed the prices to be fair and reasonable. All schedule contracts have been awarded in compliance with all federal laws and regulations. Administrative and ordering time is reduced and simplified.
- ◆ **Can any federal agency use the contract?** Yes. Government Management and Operations (M&O) contractors may also use this contract.
- ◆ **Does the federal agency need to coordinate with anyone at GSA?** It is the agency's choice. If an agency chooses to have GSA act as its contracting officer, they will pay a 4% administrative charge to GSA. If the agency uses their standard agency contracting procedures, they will pay no administrative charge. Federal agency contracting officers are usually very familiar with the GSA contract vehicle (although the agency technical contact may not be familiar with the GSA contract).
- ◆ **Is there a minimum and maximum dollar order limit?** The minimum order limit is \$100 and the maximum order limit is \$5,000,000.
- ◆ **How quickly can I procure services?** Services can normally be procured within 30 days. However, expedited services can be accomplished as quickly as within 24 hours.
- ◆ **Do I need to involve a contracting office or officer to obtain the services of a GSA Schedule contractor?** Yes. However, it is the customer's discretion which contracting office or officer to use.
- ◆ **Can a federal agency sole source the work or must it be competed?** If there is a sole source justification, the federal agency can sole source the work directly to a firm. If not, then the agency will likely issue a scope of work to three firms on the GSA list. The agency will set the response requirements and evaluation criteria before issuing the scope (for example, price quote plus two-page technical response, including resumes). Examples of typical sole source justification are previous work at the site, continuation of an effort, or unique expertise.
- ◆ **If an agency already has a contract with us (such as an ID/IQ contract) must they use that contract or can they use the GSA contract?** They can use either contract.
- ◆ **What control of my project do I retain when using a GSA Schedule contractor?** You retain all control over a project. You deal directly with Tetra Tech NUS.
- ◆ **Can I be assured that the services I need will always be available?** The schedule contract period is five years with three additional 5-year options for a total of 20 years.
- ◆ **What fee will GSA charge my project for administrating the contract?** GSA charges a one percent industrial funding fee, which is included in the GSA-approved rates.



What are the advantages of using the GSA Schedule?

Questions? If, at any point in the process you have questions, please contact:

Janet Mandel, Program Manager

(301) 528-3034;

Gabrielle Koscielski, Contract Manager

(301) 528-3066;

Debbie Pyron, Program

Administrator (803) 641-4928

Ruth Garland, Financial

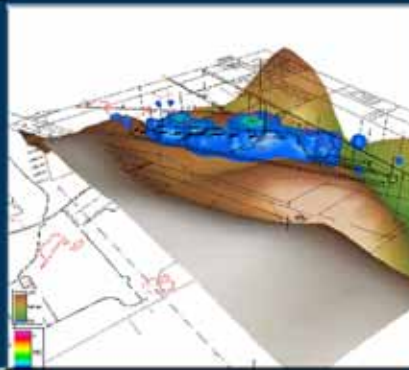
Administrator (803) 641-6329.

GSA's Federal Supply Schedule Program makes it easier for federal customers to buy Tetra Tech NUS services. Under the program, GSA has entered into a contract with Tetra Tech NUS to provide products and services to any agency of the federal government. Because the procurement process is streamlined—that is, capabilities have been reviewed, rates have been negotiated, and prequalification is complete, a federal customer can place an order directly with Tetra Tech NUS. This streamlined process can significantly reduce the time required to obtain services to as little as two weeks. Finally, the relationship between the Tetra Tech NUS and the customer is a direct one—the customer need not transfer funds to GSA.

Who Can Order Tetra Tech NUS Services from the GSA Schedule?

The following agencies and organizations can use the Tetra Tech NUS GSA Schedule:

- ◆ All military and civilian federal agencies
- ◆ All executive, legislative, and judicial branches of the government
- ◆ Government contractors authorized by a federal agency pursuant to 48 Code of Federal Regulations (CFR) 51.1
- ◆ Mixed-ownership government corporations, as defined by the Government Corporation Act



Tetra Tech NUS, Inc.